

LANUS ROUND

NEW



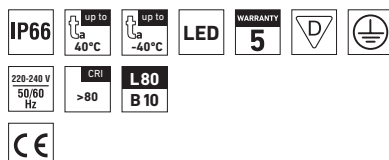
... aluminium, dustproof, waterproof round light fitting

USE

The fitting is suitable for indoor industrial spaces, warehouses, sports halls and advertisement spaces.

ADVANTAGES

- Light fitting protection **IP66**
- Ambient temperature from **-40°C to 45°C**
- Lifetime: 50 000 hours / L80B10
- High **mechanical resistance IK10**
- Body: aluminium alloy, graphite black (RAL 9001)
- Optical cover: clear PMMA with integrated optics
- Constant luminous flux even in ambient temperature of -40 °C
- Standard model CRI > 80: 4000 K
- At request CRI > 80: 3000 K, 5000 K, 6500 K, CRI > 90: 3000 K, 4000 K, 5000 K, 6500 K
- Connection: a 0.4m 3-core 3x1mm² CYSY cable
- Insulation: class I

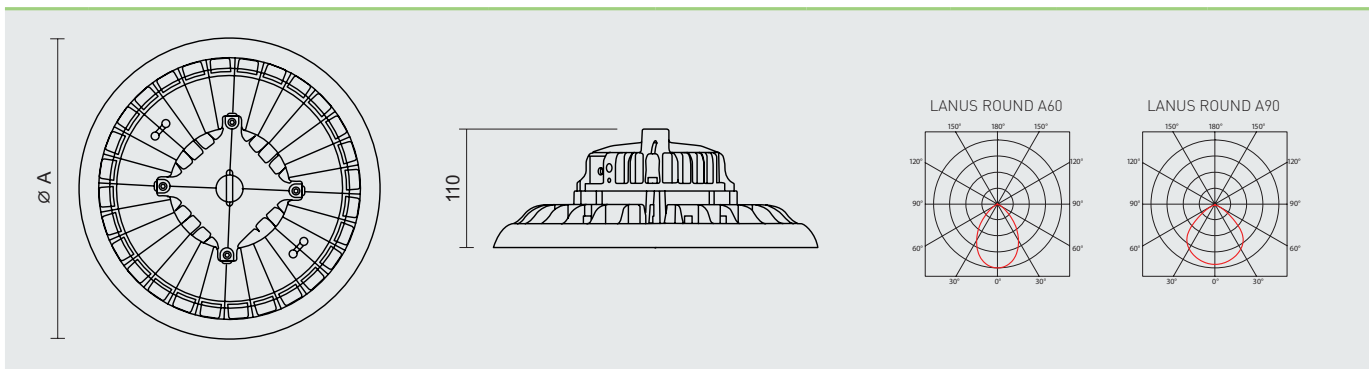


LANUS ROUND



TECHNICAL DESCRIPTION

- Light fitting protection **IP66**
- Ambient temperature from **-40°C to 45°C**
- Maximum system efficacy: **155 lm/W**
- Lifetime: 50 000 hours / L80B10
- Body: aluminium alloy, graphite black (RAL 9001)
- Reflector cover made of clear PMMA with integrated optics
- Standard model CRI > 80: 4000 K
- Connection: a 0.4m 3-core 3x1mm² CYSY cable
- Mounting: supplied with an eye bolt
- Electric equipment: LED modules, 1-10V dimmable driver controlled by 2-core 2x0,5mm² cable
- Beam angle: 60° or 90°
- The values stated for power consumption and luminous flux are in a tolerance of ± 7.5 %



Code	Type	Luminous flux of LED modules [lm]	Luminous flux of light fitting [lm]	Power consumption [W]	System efficacy [lm/W]	UGR Longitudinal/transverse	Net weight [kg]	A [mm]
For ambient temperature t _a = 45 °C								
106901	LANUS ROUND S 15000/840 A60	15590	14340	94,8	151	26.5 / 26.5	2,1	300
106903	LANUS ROUND S 15000/840 A90	15590	14650	94,8	155	28.3 / 28.3	2,1	300
106902	LANUS ROUND M 25000/840 A60	24480	22520	148,5	152	27.0 / 27.0	2,6	345
106904	LANUS ROUND M 25000/840 A90	24480	23010	148,5	155	28.8 / 28.8	2,6	345

LIGHT FITTING ATTACHMENT

An eye bolt is supplied with the fitting.



LIGHT FITTING DETAILED VIEW

LANUS ROUND



LANUS SQUARE

NEW



... aluminium, dustproof, waterproof square light fitting

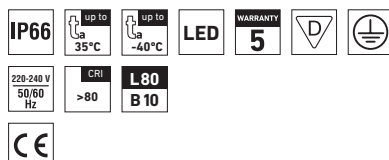
USE

The light fixture is suitable for high halls, sports venues, advertising spaces and indoor and outdoor industrial spaces.

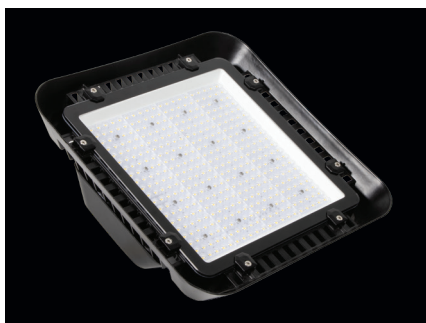
Characteristics of the used tempered glass and its shattering power are controlled by the ČSN EN 12150-1 standard. For applications where spontaneous fracture means a higher safety risk, we recommend to use the version with the safety film (SF).

ADVANTAGES

- Light fitting protection **IP66**
- Ambient temperature from **-40°C to 35°C**
- Lifetime: 50 000 hours / L80B10
- Ventilation membrane
- Body: aluminium alloy, graphite black (RAL 9001)
- Optical cover: clear heat-strengthened safety glass
- Constant luminous flux even in ambient temperature of -40 °C
- Standard model CRI > 80: 4000 K
- At request CRI > 80: 3000 K, 5000 K, 6500 K, CRI > 90: 3000 K, 4000 K, 5000 K, 6500 K
- Installation using a 0.4m 3-core 3x1mm² CYSY cable
- Insulation: class I

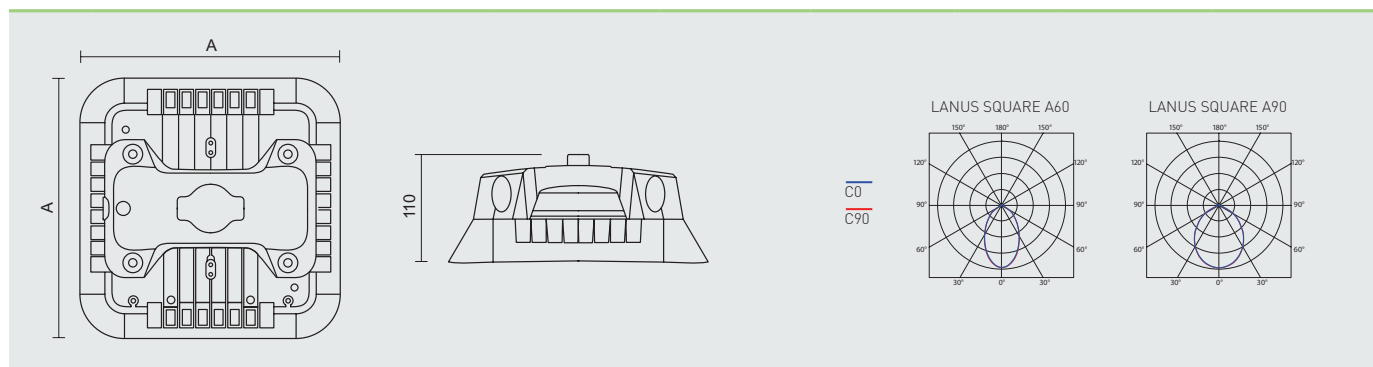


LANUS SQUARE



TECHNICAL DESCRIPTION

- Light fitting protection **IP66**
- Ambient temperature from **-40°C to 35°C**
- Maximum system efficacy: **153 lm/W**
- Lifetime: 50 000 hours / L80B10
- Body: aluminium alloy, graphite black (RAL 9001)
- Reflector cover: clear heat-strengthened safety glass
- Standard model CRI > 80: 4000 K
- Connection: a 0.4m 3-core 3x1mm² CYSY cable
- Mounting: supplied with an eye bolt
- Electric equipment: LED modules, 1-10V dimmable driver controlled by 2-core 2x1mm² cable
- Beam angle: 60° or 90°
- The values stated for power consumption and luminous flux are in a tolerance of ± 7.5 %



Code	Type	Luminous flux of LED modules [lm]	Luminous flux of light fitting [lm]	Power consumption [W]	System efficacy [lm/W]	UGR Longitudinal/transverse	Net weight [kg]	A [mm]
For ambient temperature $t_a = 35^\circ\text{C}$								
106905	LANUS SQUARE S 15000/840 A60	15510	14270	98,8	144	27.8 / 27.9	2,3	260
106907	LANUS SQUARE S 15000/840 A90	15510	14270	98,8	144	29.9 / 30.0	2,3	260
106906	LANUS SQUARE M 22000/840 A60	21970	20650	135,2	153	27.3 / 27.3	3,4	310
106908	LANUS SQUARE M 22000/840 A90	21970	20650	135,2	153	29.4 / 29.4	3,4	310

LIGHT FITTING ATTACHMENT

- a) An eye bolt is supplied with the fitting
- b) Ceiling/wall brackets - not included
- c) Wall brackets - not included
- d) Rope attachment set - not included



Svensk återförsäljare

Nordic Eco Energy AB, Skelleftehamn
 Tel. 070-644 2816
 info@nordicecoenergy.se - www.nordicecoenergy.se

