

FROST PLUS



BIM
ready

... for cold stores and freezing facilities with temperatures down up to -40 °C

USE

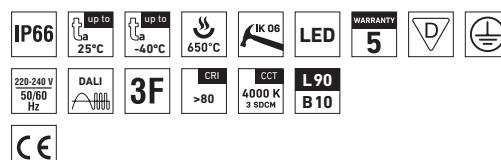
Temperatures of chilled foods range from 0–5 degrees, whilst in freezing facilities can drop up to –40 degrees Celsius. Suitable luminaires for such demanding environments must handle extreme low temperatures, withstand condensation and vapors, have low maintenance and long service life to keep costs low.

Our lighting fixture for freezing storage and chilled storage surroundings is made of ABS material, is weather-proofed and chemically resistant (IP66 and IK 06).

FROST PLUS provide with high quality and good solution enduring a long service life of 50 000 hours.

ADVATAGES

- Light fitting protection IP66
- Minimum ambient temperature down to $t_a = -40\text{ °C}$
- Lifetime: 50,000 hours / L90B10
- Diffuser: translucent acrylate (AC), UV stable, chemically resistant
- Body: dark grey ABS, UV stable, chemically resistant
- Standard model - CRI > 80: 4000 K
- At request CRI > 80: 3000 K, 5000 K, 6500 K, CRI > 90: 3000 K, 4000 K
- It can be delivered in dimmable version
- Through-wiring of up to 5 wires at body
- Certification: CE

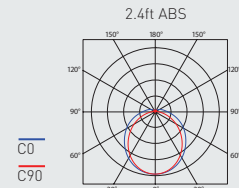


FROST PLUS



TECHNICAL DESCRIPTION

- Light fitting protection: IP66
- Minimum ambient temperature: $t_a = -40\text{ }^\circ\text{C}$
- Maximum ambient temperature: $t_a = 0\text{-}25\text{ }^\circ\text{C}$
- Maximum system efficacy: 154 lm/W
- The watt and lumen values can vary by $\pm 7,5\%$
- Standard model - CRI > 80: 4000 K
- MacAdam = 3 SDCM
- Lifetime: 50,000 hours / L90B10
- Diffuser: translucent acrylate (AC), UV stable, chemically resistant
- Body: dark grey ABS, UV stable, chemically resistant
- Reflector: steel sheet, white colour (RAL 9003)
- Clips: polyamide + 15% glass fibre
- Sealing: polyurethane (PUR), foamed body groove
- Cable glands: screwed PG 13.5
- Distance part: polyamide + 10% glass fibre
- Terminal block: screwless, three-pole (basic version)
- Installation: package contains stainless hooks and stainless brackets
- Electric equipment: LED modules, current driver



Type	Min. ambient temperature [°C]	Luminous flux of LED modules [lm]	Luminous flux of light fitting [lm]	Power consumption [W]	System efficacy [lm/W]	UGR Longitudinal/transverse	Net weight [kg]	A [mm]	D [mm]
For ambient temperature down to $t_a = 25\text{ }^\circ\text{C}$ - body: dark grey - diffuser: translucent acrylate									
FROST PLUS 2.4ft 5200/840	-40	5230	4600	30,3	152	23.4 / 22.1	2,25	1172	700
FROST PLUS 2.4ft 6400/840	-40	6240	5490	36,3	151	24.0 / 22.7	2,25	1172	700
FROST PLUS 2.4ft 8800/840	-40	8690	7650	49,7	154	25.2 / 23.9	2,25	1172	700
FROST PLUS 2.5ft 6500/840	-40	6500	5720	37,1	154	23.4 / 22.1	2,75	1452	940
FROST PLUS 2.5ft 8000/840	-40	7770	6840	44,4	154	24.0 / 22.7	2,75	1452	940
FROST PLUS 2.5ft 11000/840	-40	12310	10830	71,1	152	25.6 / 24.3	2,75	1452	940

Battery heating consumption 10W

FROST PLUS

Non-dimmable driver - plastic clips

Code	Type	3F
103122	FROST PLUS 2.4ft 5200/840	103128
103123	FROST PLUS 2.4ft 6400/840	103129
103124	FROST PLUS 2.4ft 8800/840	103130
103125	FROST PLUS 2.5ft 6500/840	103131
103126	FROST PLUS 2.5ft 8000/840	103132
103127	FROST PLUS 2.5ft 11000/840	103133

LEGEND

- 1F** 1-phase 3 core through-wiring in the luminaire
- 3F** 3-phase 5 core through-wiring in the luminaire
- M1h** emergency back-up source with 1 hour operating time for maintained emergency illumination
- M3h** emergency back-up source with 3 hour operating time for maintained emergency illumination
- 3F Mxh** 3-phase 5 core through-wiring in the luminaire (L3 used for emergency unit unswitched power supply)

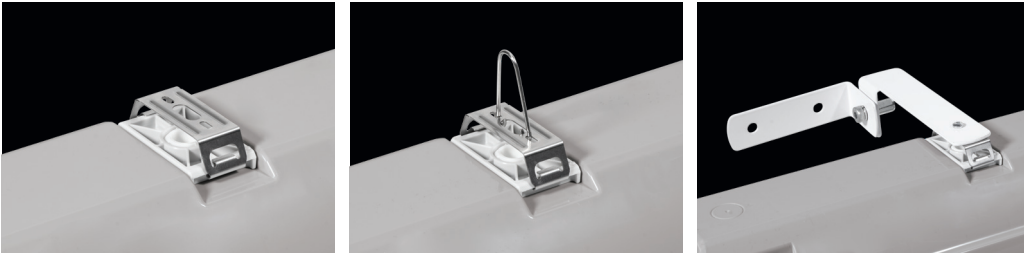
- DALI** version with digital dimmable driver DALI
- DALI 1F** 1-phase 5 core through-wiring in the luminaire
- DALI 3F** 3-phase 7 core through-wiring in the luminaire
- DALI 3F Mxh** 3-phase 7 core through-wiring in the luminaire (L3 used for emergency unit unswitched power supply)



Tel. 070-644 28 16 - info@nordicecoenergy.se - www.nordicecoenergy.se

LIGHT FITTING ATTACHMENT

- a) Directly to a ceiling or a wall with the use of screws and stainless brackets
- b) Suspension with the use of stainless hooks
- c) Attachment with the use of side hangers to the wall - is not included in accessories

**LIGHT FITTING DETAILED VIEW**

FROST PLUS

